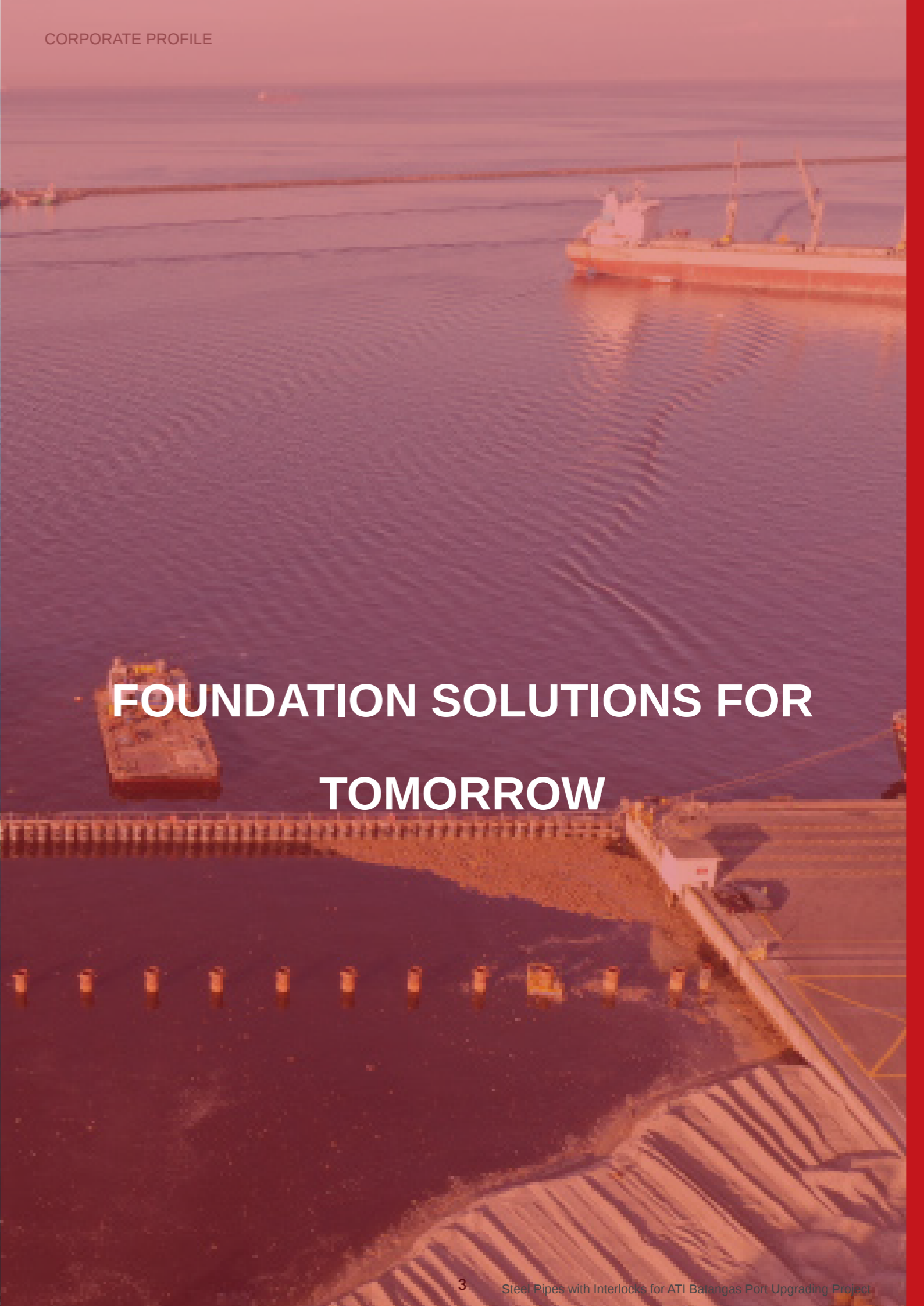




MLION CORPORATION

Corporate Profile
2020



FOUNDATION SOLUTIONS FOR TOMORROW

17

RANKED OUT OF TOP 50 SME IN SINGAPORE FOR OVERSEAS REVENUE

163

RANKED OUT OF TOP 1000 SME IN SINGAPORE IN REVENUE

71

RANKED OUT OF TOP 1000 SME IN % CHANGE IN TOTAL ASSETS

What We Do

MLION CORPORATION PTE. LTD. is a Foundation Solutions company focusing on Ports and Waterfront development, Civil Excavations and Power Generation projects in the Asian Region

Civil and Marine Infrastructure - they are the basic building block that every economy requires to thrive on. At MLION CORPORATION PTE. LTD., we help to provide that.

We Source, Value Add, Store and Deliver solutions that enable economies to grow and prosper. We do so by providing *Solutions For Tomorrow*.

Founded in 2011, our vision is to provide a cutting edge customized steel solutions for customers in the construction market. Our focus has been on Ports and Waterfront development, Civil Excavations and Power Generation related infrastructure.

We do so with products such as Steel Sheet Piles, Steel Pipes, Tie Rods, Long and Flat Steel Products, Crane Rails and its Accessories, Fender and Bollards, Bitumen and Heavy Machinery.

Every project has its own unique requirements and constraints. This could be a challenging delivery schedule, a difficult to reach site location, a tight budget for the project, or special requirements on lengths and specifications on the products required.

MLION CORPORATION listens, partners and creates unique solutions, to assist customers by solving these problems while increasing productivity and reducing cost effectively. It is how we provide these solutions that makes us a market leader in our industry.

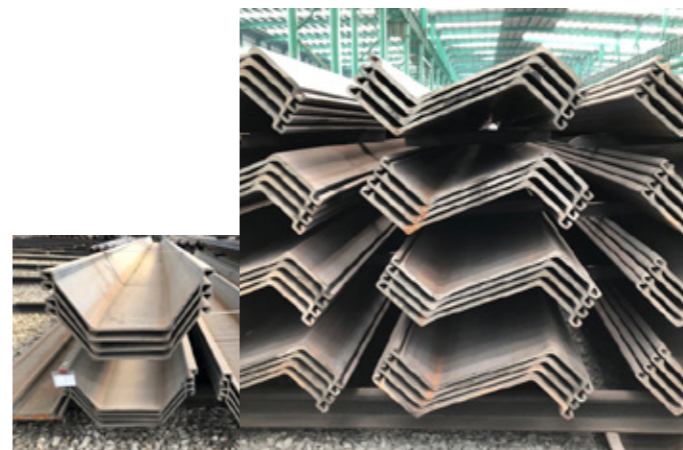
Our team sources only from the best mills in the industry, with excellent track record and safety. We collaborate with *Intertek Moody* and *Bureau Veritas* to provide customers with an added level of inspection, quality and assurance.

We also represent many of these suppliers exclusively in the region and therefore provide long term cooperation and stability in the supply chain.

We value add to the products we supply by customizing the products for each project. Customization includes, special steel grade requirements, specific lengths and fabrication on request.

MLION CORPORATION operate local offices in the region to better access markets, and provide downstream services such as warehousing, logistics, financing and quick response time to the projects.

Page Facing: Road upgrading works in Singapore.



We Source, Value Add, Store and Deliver solutions that enable economies to grow and prosper.



AGE OLD BUSINESS

Redefined

Providing Solutions for Tomorrow: Being the link in the global supply chain, we provide customers with access to the global trade. We provide the vital link between producers of materials to the end users who consume it. We do so by adding value, by customizing and value engineering, with exceptional performance and customer service.

As a company we believe that we provide customers with a solution and not a product or commodity. In an increasingly competitive market, our ability to respond and shift with varying patterns of demand provides the key differentiation in our market offering.

Investment: We continually invest in our people, our downstream network and channelization to become the forefront market leading physical merchant. Our shipping and chartering team provides us with access to vast network of trade routes previously not possible. We consistently move challenging and out of gauge products to remote locations around the world.

Another key aspect of our downstream offering is our ability to manage risk for the customer. We can provide fixed rate contracts, floating rate contracts, future pricing and financial hedging to the materials which we supply.

Accreditation: MLION CORPORATION is an ISO 9001:2015 accredited company and quality assurance is an integral part of our core values. Our inspectors are constantly in the factories to ensure that quality is upheld and safety is adhered to. For projects that we are actively involved, our staff are on site to assist should a need arise.

Recognition: In 2019 we were accorded the prestigious Enterprise 50 award, ranking 33rd position. We continued to be featured in the annual SME 1000 award honoring the top SME companies in Singapore, and Straits Times and Statista also featured us as Singapore's Fastest Growing Companies.

Page Facing: Reclamation works and wharf construction in Manila.



OUR TRADING ACTIVITY

CORE PRODUCTS

HOT ROLLED STEEL SHEET PILES

- Z Shape
- U Shape
- Hat Type Sheet Piles

COLD FORMED STEEL SHEET PILES

- Z Shape
- U Shape
- Omega Shape

STEEL PIPES

- Spirally Welded
- Longitudinally Welded (JCOE / UOE)
- Three Rolled Bend (TRB)
- Seamless Pipes

INTERLOCKING STEEL PIPES

- O-Pile Interlocking
- P-P, C-T, L-T Interlocks
- Internal Clutch Plate - T Interlocks (Pipe Roof Application)
- Down The Hole Drilling Method Interlocks

SPECIALIZED INTERLOCKS

- O-Pile Interlocks
- Steel Pipe - Sheet Pile Interlocks (C9 / CP2)
- Corner Pile Interlocks (CP1)

UPSET END TIE RODS

- D2 and Type II Tie Rods

CRANE RAILS & ACCESSORIES

- Gantrex Rails Clips, Pads, Bolts, Plates and Grout
- Crane Rails
- Installation

LONG & FLAT STEEL PRODUCTS

- Beams, Angle, Channels, HRC, Plates

DECK FURNITURE

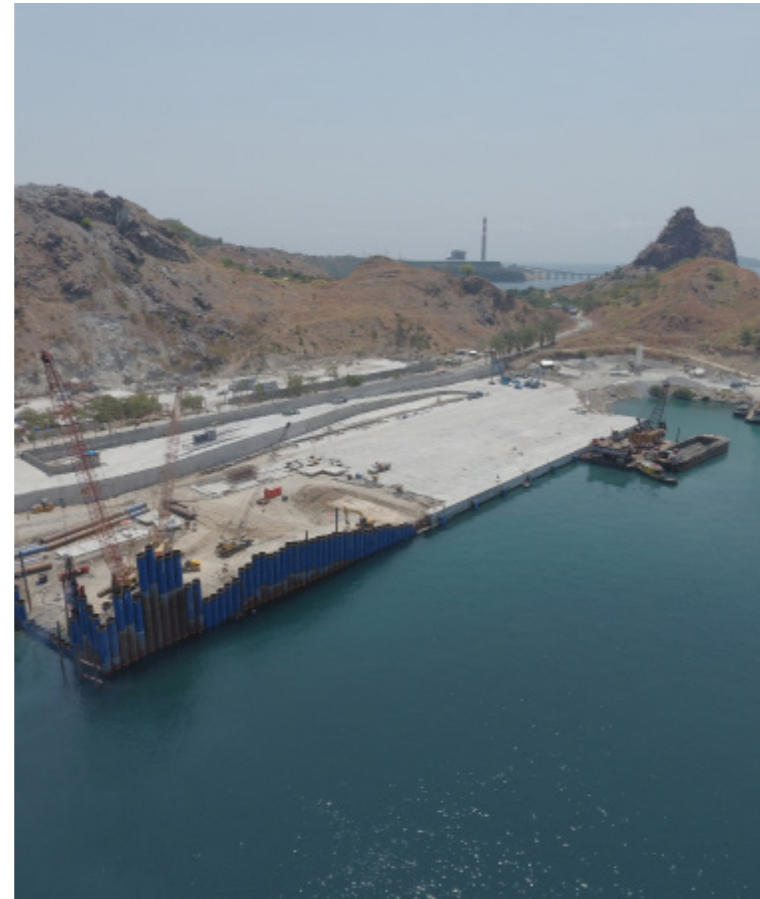
- Fenders
- Bollards

HEAVY MACHINERY

- Vibratory Hammers
- Mobile TRB Pipe Mill



**PORT
 WHARF
 JETTY
 TERMINALS
 RORO FACILITY
 BREAKWATER
 RIVER PROTECTION
 FLOOD CONTROL
 SEAWALL
 RECLAMATION
 BRIDGES
 COFFERDAM
 TUNNELLING
 INTAKE AND OUTFALL
 RAILS
 RAIL WELDING
 DECK FURNITURE
 MACHINERY**



Our Clients

- China Harbour Engineering
- Manila North Harbour Ports Inc.
- Seasia Nectar Port Services Inc.
- HSL Constructors Pte Ltd
- Shanghai Tunnel Engineering Corp.
- McConnell Dowell South East Asia
- Qingdao Municipality Construction
- Penta Ocean Construction Co., Ltd.
- Daelim Construction
- KTC Civil Engineering
- Lum Chang Construction
- Marina Technologies & Construction
- Maeda Construction
- Bachy Soletanche Construction
- Atlantic Gulf & Pacific Company Inc.
- Primary Structures Corporation
- Ensul Engenharia S.A.
- Sem Calaca Power Corporation
- Sunwest Construction and Development Corporation
- Baku Shipyard
- Prime BMD Construction
- Davao International Container Terminal Inc.
- Prime Metro BMD Corporation
- BNR Construction and Development Corporation
- Chan and Chan Engineering
- Ed Züblin AG

Top Right Clockwise: 1. Seasia Nectar Port Services Inc in Mariveles, Philippines. 2. Philippines Port Authority in Tacloban, Philippines
 3. Manila North harbour Port Inc. in Tondo Manila, Philippines.



GET IN TOUCH

SINGAPORE

MLION CORPORATION PTE LTD
21 Bukit Batok Crescent
#29-76 WCEGA Tower
Singapore 658065

Tel: +65 6334 3762
Fax: +65 6334 3755
Email: sales@mlioncorp.com

TAIWAN

MLION CORPORATION PTE LTD (REP. OFFICE)
Rm. 1, 5F., No. 1, Baosheng Rd.,
Yonghe Dist., New Taipei City 234,
Taiwan (R.O.C.)

Tel: +65 6334 3762
Fax: +65 6334 3755
Email: taiwan@mlioncorp.com

PHILIPPINES

Manila Office

Certuso Structural Specialists Corp.
Unit 806, One Park Drive Office
11th Drive, Corner 9th Ave,
Bonifacio Global City,
Taguig 1630 Philippines

Tel: +632 368 9619
Email: phil@mlioncorp.com

Luzon Warehouse
3M Warehouse
Unit 1 Phase 4, Brgy. Sta. Rosa II,
Marilao Bulacan

Tel: +632 368 9619
Email: phil@mlioncorp.com

Davao Office

KM3 MacArthur Highway,
Matina, Davao City

Tel: +63 82 298 0211
Fax: +63 82 298 0211
Email: sales@mlioncorp.com

INDONESIA

MLION CORPORATION PTE LTD
DBS Bank Tower, 28/F, Ciputra World One
Jl. Pro. Dr. Satrio Kav, 3 - 5 Jakarta,
12940 Indonesia

Tel: (+62) 21 2988 8438
Fax: (+62) 21 2988 8201
Email: indo@mlioncorp.com

MALAYSIA

MLION TRADING (MALAYSIA) SDN BHD
Room 767, Level 7, Oasis Wing,
Brunsfield Oasis Tower 3
No. 2, Jalan PJU 1A/7A, Oasis Square
Oasis Damansara, 47301 Petaling Jaya
Selangor Darul Ehsan

Tel: +60 (3) 7848 5830
Email: msia@mlioncorp.com

KUCHING / EAST MALAYSIA

Sublot 21, 1st Floor. Media Setia
Raja Commercial Center,
Jalan Setia Raja, 93350 Kuching
Sarawak Malaysia

Email: msia@mlioncorp.com

THAILAND

MLION CORPORATION PTE LTD
Office 515, No. 999 Gaysorn Building,
5th Floor Unit 5B-1,
Ploenchit Rd., Lumpini, Patumwan,
Bangkok 10330, Thailand

Tel: (+66) 2 624 0565
Fax: (+66) 2 624 0509
Email: thai@mlioncorp.com